

# IRINA LOREZ

## HOW TO GET HIGH

# TECHNICAL RIDER

### CHOREOGRAPHER

Irina Lorez  
Kasimir-Pfyffer-Strasse 20  
CH- 6003 Luzern  
+41 +41 310 81 85  
+41 +79 771 63 84  
irina.lorez@bluewin.ch

### ADMINISTRATION AND CONTACT

Irina Lorez  
Kasimir-Pfyffer-Strasse 20  
CH- 6003 Luzern  
+41 +41 310 81 85  
+41 +79 771 63 84  
irina.lorez@bluewin.ch

### LIGHT

Florian Bach and Leticia Skrycky  
florian(at)artamis.org  
mellonpumpkin(at)gmail.com

### SOUND

Domenico Ferrari

### Please note

This technical rider is the final version.  
All elements in **bold** are **indispensable**.  
**Technical rider is part of the contract**  
**Light plan & sound Diagram are part of the**  
**technical rider**

## COMPANY TOURING

---

3 persons including:  
1 Choreographer  
1 Performer  
1 Light Designer

## GENERAL

---

**Duration** about 60 min.

**Dressing rooms** 1 dressing room **with shower** for the performers, snacks and drinking water for the crew

## REQUIERED INFORMATIONS

---

**In order to prepare properly our arrival the organiser has to send us in advance all technical information including the contact of the person in charge of the technics, a complete listing of the lightening and sound devices, digital plans of the venue at a minimum scale of 1:100 with cross section.**

We will send an adapted light plan before our arrival.

## STAGE

---

**Dimensions:** **10m minimum opening of stage (12m ideal)**  
**10m minimum depth (12m ideal)**  
5 m height minimum under the grid  
0 % rake

**Only per agreement** of the company the show can be built in a smaller version. Please send plans of the venue in advance

**Floor:** **A clean black dance floor**

**Cloth:** **Bare black clean walls, no curtains.**  
If the walls are not clean or black 1 straight black box made of black velvet curtains covering right, left and upstage walls

**Grill and Pipes** Depending on the layout of the grid, **additional pipes may be required** (to be specified according to the venue)

The grill of the venue must be free of any lightening devices before our arrival.

## FX

---

**Smoke effects occur during the show,**

**All fire alarms have to be switched off during rehearsing hours and shows hours.**

The smoke machines are hung in the grid. Please provide 6 x tension sangle + safetyts to fix and secure them.

## LIGHT

---

The list below depends on the size and the configuration of the stage. It can be adapted after the company has received the technical plans of the theatre.

<b>Light control board</b>	The light is controlled with a Lanbox, and 2 computers (provided by company).
<b>DMX</b>	theatre must provide a clean DMX 5 Pole data.
<b>Control desk</b>	<b>The Light and sound control desks must be next to each other</b> 1 secondary VGA or HDMI screen to connect to computer
<b>Spotlights:</b>	<b>27 x identical Assymetric 1kw Floods (Type Arri CYC 1250)</b> <b>2 x Profiles (type ETC zoom 25-50°)</b> <b>2 x PC 1Kw with barndoors</b>  <b><u>All lamps with filter frames</u></b>  <b>All devices substitution or mix of light devices can be only done after getting an agreement from us.</b>
<b>Smoke:</b>	<b>3 x DMX Smoke Machine</b> <b>(Prefered type Smoke machine : Smoke Factory Data II 2600w )</b>
<b>Dimmers:</b>	<b>32 Dimmers 2.5kw</b>
<b>Filters</b>	<b>LEE 789 / LEE 127 / LEE 770 / LEE 010 / LEE 088 / LEE 740</b> <b>LEE 172 / LEE 707 / LEE 708 / LEE 746 / LEE 744 / LEE 332</b> Or Rosco equivalent  Black Wrap / Black aluminium tape
<b>Miscellaneous</b>	<b><u>Exit lamps in the sight-line of the audience should be darkened, switched off or covered.</u></b>

## SOUND

---

<b>System:</b>	<b>1 high quality PA system</b> <b>1 reverb effect</b> <b>4 high/mid range speakers (&amp; amps) hanging rear and behind the audience</b> <b>2 sub woofer (located under audience or out of sight)</b> <b>4 x active DI boxes</b>
<b>Sound desk:</b>	<b>1 mixing desk – 6 inputs minimum</b> <b>6 independent outputs</b>
<b>cables:</b>	<b>2 x from DI boxes to computers</b>

## LOGISTICS

---

<b>Setup Day:</b>	12 hours for set up of the light and sound plus focus
<b>Cleaning:</b>	Wet cleaning of the floor before rehearsals and 2 hours before the shows.
<b>Costumes:</b>	Washing machine to wash costumes after the show (only if more than one show)

## WORKING SCHEDULE

---

(working schedules have to be specified for each venue according to the stage preparations)

<b>Day -1</b>	
09:00 – 13:00 Light, Fx and sound set up, Patch If needed Black box	<b>2 light technicians</b> <b>1 sound technician</b>
13:00 – 14:00 Dinner break	
14:00 – 17:00 Finish set up Start Focus	<b>2 light technicians</b>
17:00 – 18:00 Sound check	<b>1 sound technician</b>
18:00 – 21:00 Arrival performers Placement, raw rehearsal	<b>1 light technician</b>
<b>Performance day</b>	
09:00 – 11:00 corrections details.	<b>1 light technician</b> <b>1 sound technician</b>
11:00 – 18:00 Rehearsal	<b>1 light technician (stand by)</b> <b>1 sound technician (stand by)</b>
18:00 – 19:00 cleaning free stage	
Evening SHOW	<b>1 light technician (stand by)</b> <b>1 sound technician (stand by)</b>
After show strike down.	

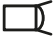
## APPENDIX

---

Plot lighting + Sound, 1:100 / A4 + Filter listing

# HOW TO GET HIGH / I.LOREZ / GENERIC LIGHT PLOT / 1:100 / LIGHTENING DESIGN: F.BACH - L.SKRYCKY

 27 x ASSYM FLOODS 1 Kw

 7 x PC 1 Kw

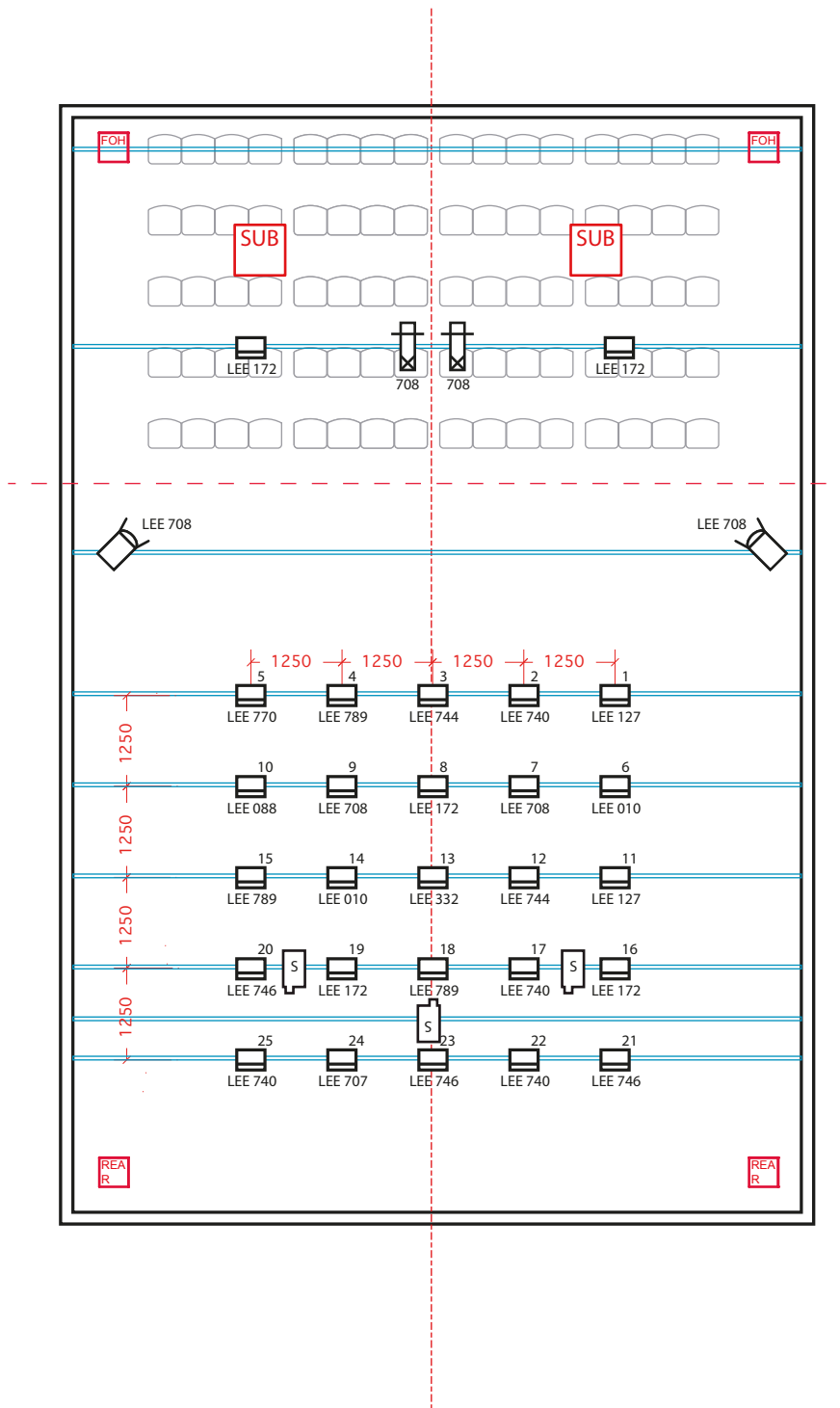
 2 X PROFILES 750w 25 - 50°

 SMOKE MACHINE

 SPEAKERS

32 x DIMMER 2.5 Kw

A4 PRINT@ 100% = 1:100



FILTER LISTING HOW TO GET HIGH			
COLORS	FLOODS	PC	PROFILE
LEE 789	3		
LEE 127	2		
LEE 770	1		
LEE 010	2		
LEE 088	1		
LEE 740	4		
LEE 172	5		
LEE 707	1		
LEE 708	2	2	2
LEE 746	3		
LEE 744	2		
LEE 332	1		